

MONTHLY MEMBERSHIP PROGRESS REPORT

LOCATION INDIA

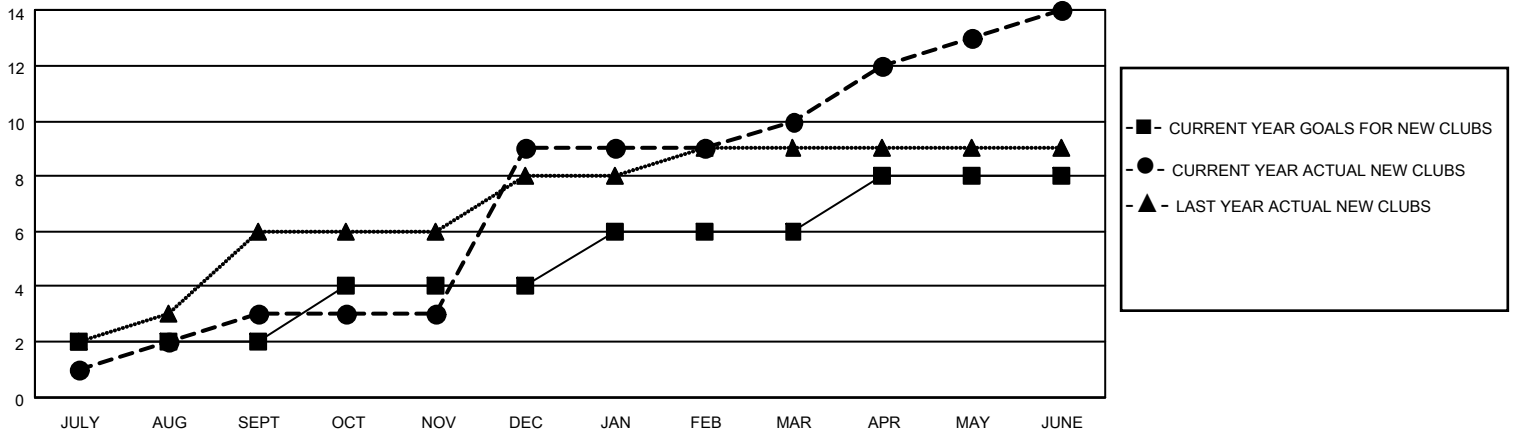
District 318 A

Results as of: 6/30/2021

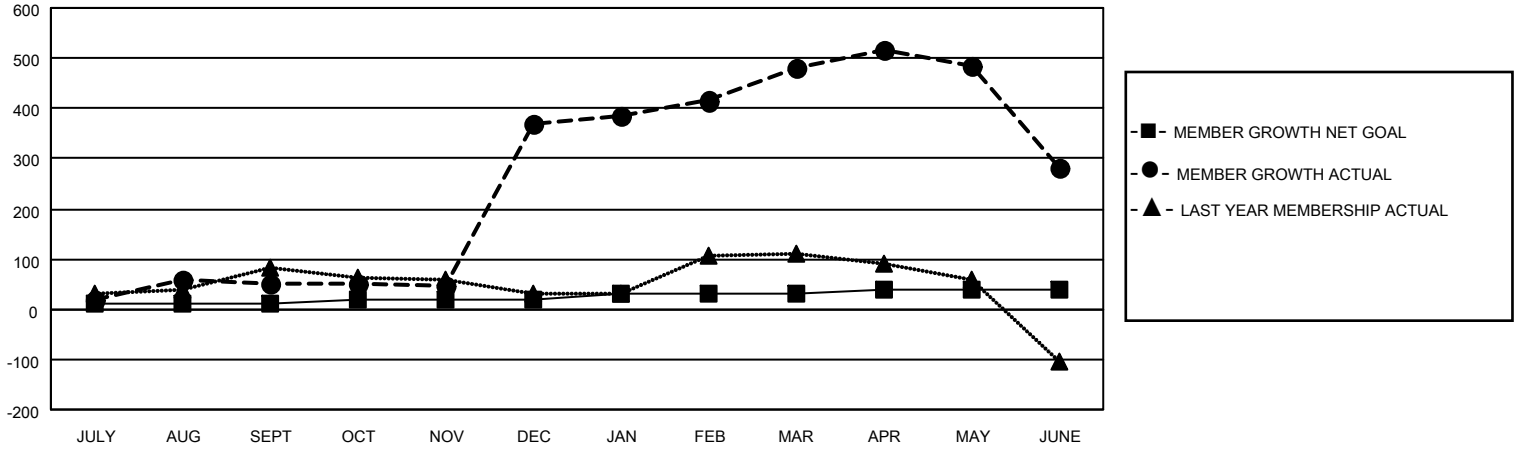
Clubs			
RESULTS FOR 2020-2021			
QUARTER	NEW CLUB GOAL	NEW CLUBS	DROPPED CLUBS
JULY/AUG/SEPT	2	3	2
OCT/NOV/DEC	2	6	0
JAN/FEB/MAR	2	1	6
APR/MAY/JUNE	2	4	0

Members			
RESULTS FOR 2020-2021			
QUARTER	MEMBER GROWTH NET GOAL	MEMBER GROWTH ACTUAL	DROPPED MEMBERS ACTUAL (including transfers)
JULY/AUG/SEPT	10	217	158
OCT/NOV/DEC	10	474	149
JAN/FEB/MAR	10	260	113
APR/MAY/JUNE	10	167	348

GOALS AND ACTUAL NEW CLUBS CUMULATIVE



GOALS AND ACTUAL MEMBERS CUMULATIVE



DROPPED CLUBS: 8	109 CLUBS OF 143 ADDED 1 OR MORE NEW MEMBERS	<u>GENDER DISTRIBUTION</u> MALE 3,115 (73.92%) FEMALE 1,099 (26.08%)
<u>DROPPED MEMBERS</u> DECEASED 30 CLUB CANCELLED 73 OTHER 665 <hr/> TOTAL 768	CLICK HERE FOR CUMULATIVE MEMBERSHIP DATA	TOTAL FAMILY UNIT MEMBERS 2,085 FAMILY MEMBERS PAYING HALF DUES 1,126